



SW POLK FIRE DISTRICT



SW POLK FIRE DISTRICT

Annual Report 2021

15455 Salt Creek Road
Dallas, OR 97338

503-925-4275
info@swpolkfd.org

Table of Contents

Contents

Mission Statement	3
Organization	4
District Map	6
Operational Transitions	7
Response Zones.....	8
Incident Summary	9
Mutual Aid Data	10
EMS Response Times	11
Fire Incident Response Times.....	12
Facilities	13
Apparatus	14
Financial Summary.....	15

Mission Statement

We protect our communities from the adverse effects of fire and medical emergencies, and other hazardous situations.

ABOUT THE DISTRICT

Southwestern Polk County Rural Fire Protection District was formed in 1947 to “provide more adequate protection for rural residents, their homes, and crops.” Additionally, the District was formed to have the immediate effect of reducing insurance premiums on all property within the boundaries of the District. Over the years, the response types of the District have trended toward fewer fires and more medical and rescue calls. Call volume has steadily increased for the District, including a 19% increase in 2021.



SW Polk Fire District currently provides fire & emergency medical response services to the rural Bridgeport, Dallas, Falls City, Oak Grove, Perrydale, Rickreall, and Salt Creek communities. We also provide mutual aid support to our neighboring agencies. We have recently expanded our emergency medical services by adding ambulance transport capabilities, located in the Salt Creek Community Fire Station.



SW Polk is a combination district with both career and volunteer personnel. The Salt Creek Community Fire Station is currently staffed 24/7 by career personnel. Volunteers respond to calls from all three stations, when they are available. We are located on the west side of the beautiful Willamette Valley, a mere 40 minutes from the Pacific Coast and 60 minutes from the foothills of the Cascades. We service a landscape that includes farmland, forestland, and vineyards. Our combination district includes an area of 123 square miles with a population of approximately 6,100 people.

STATIONS

**Bridgeport
Community Fire Station**
6040 S Kings Valley Hwy

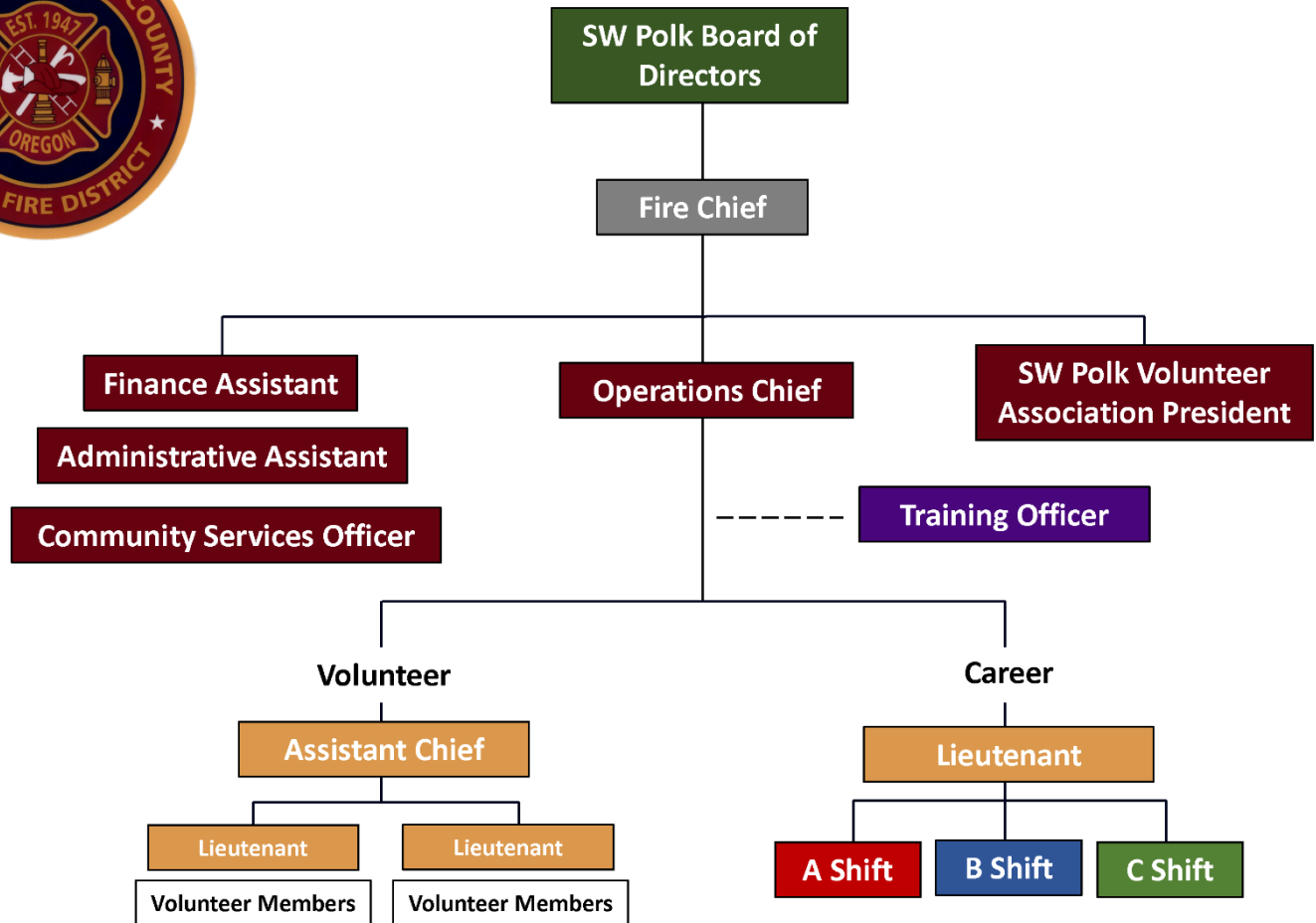
**Rickreall
Community Fire Station**
9105 Rickreall Road

**Salt Creek
Community Fire Station**
15455 Salt Creek Road

Organization



ORGANIZATIONAL CHART



An organizational chart is a graphic representation of the structure of an organization showing the relationships of the positions or jobs within it. A well-presented organizational chart can help improve clarity and communication for a business, presenting clear lines of communication and authority. They help to improve communication and visualize the bigger picture. Organizational charts are constantly updated, as the needs of the organization change.

Board of Directors



Rod Watson
PRESIDENT



Frank Pender
VICE PRESIDENT



Bob Davis
SECRETARY/TREASURER



Keith Moore
DIRECTOR

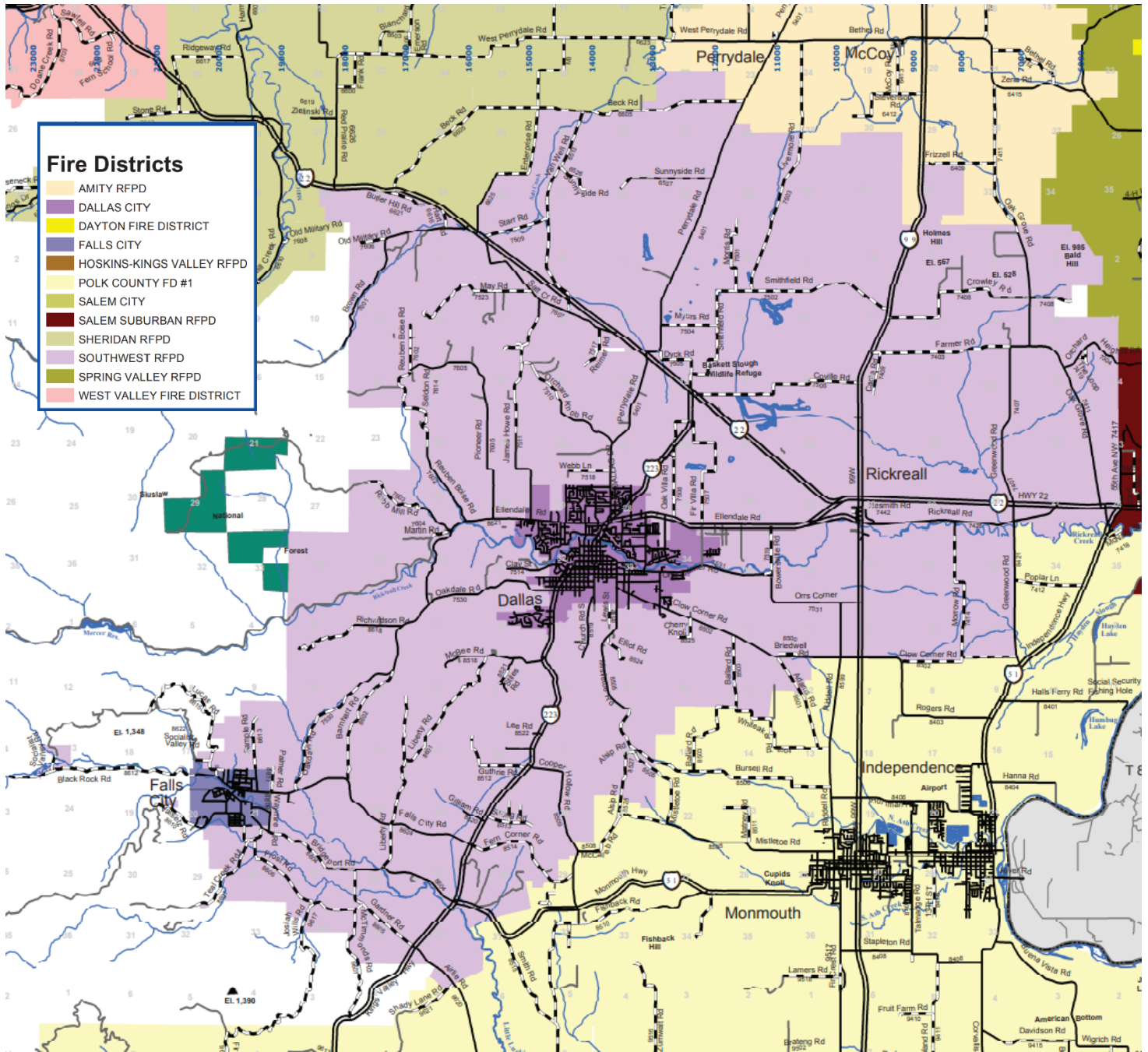
SW Polk Fire District is governed by a citizen elected Board of Directors (BOD), similar to other government entities. They are required to comply with all Oregon laws governing fire districts, as well as industry standards.

The BOD hires a Chief Executive Officer, typically a Fire Chief, to manage the district's day-to-day fire and emergency medical services (EMS) operations. An advantage to boards like these is the ability to narrow in on important issues. While other governing bodies, like city councils, must divide their time among many services, the fire district BOD scope is limited to fire and EMS. This allows the directors to "drill down" to a deeper understanding of critical life-saving services, and evaluate emerging trends, technologies, and available options.



Bruce Sigloh
DIRECTOR

District Map



Operational Transitions

In 2021 SW Polk Fire District continued to operate in an Intergovernmental Agreement (IGA) with Sheridan and West Valley Fire Districts. Under the IGA, SW Polk was able to place paid staff at the old Rickreall station, at 275 Main Street, 12-hours per day. This supported the Volunteer Firefighters, by assisting them during the busiest hours and lowest availability for call volume.

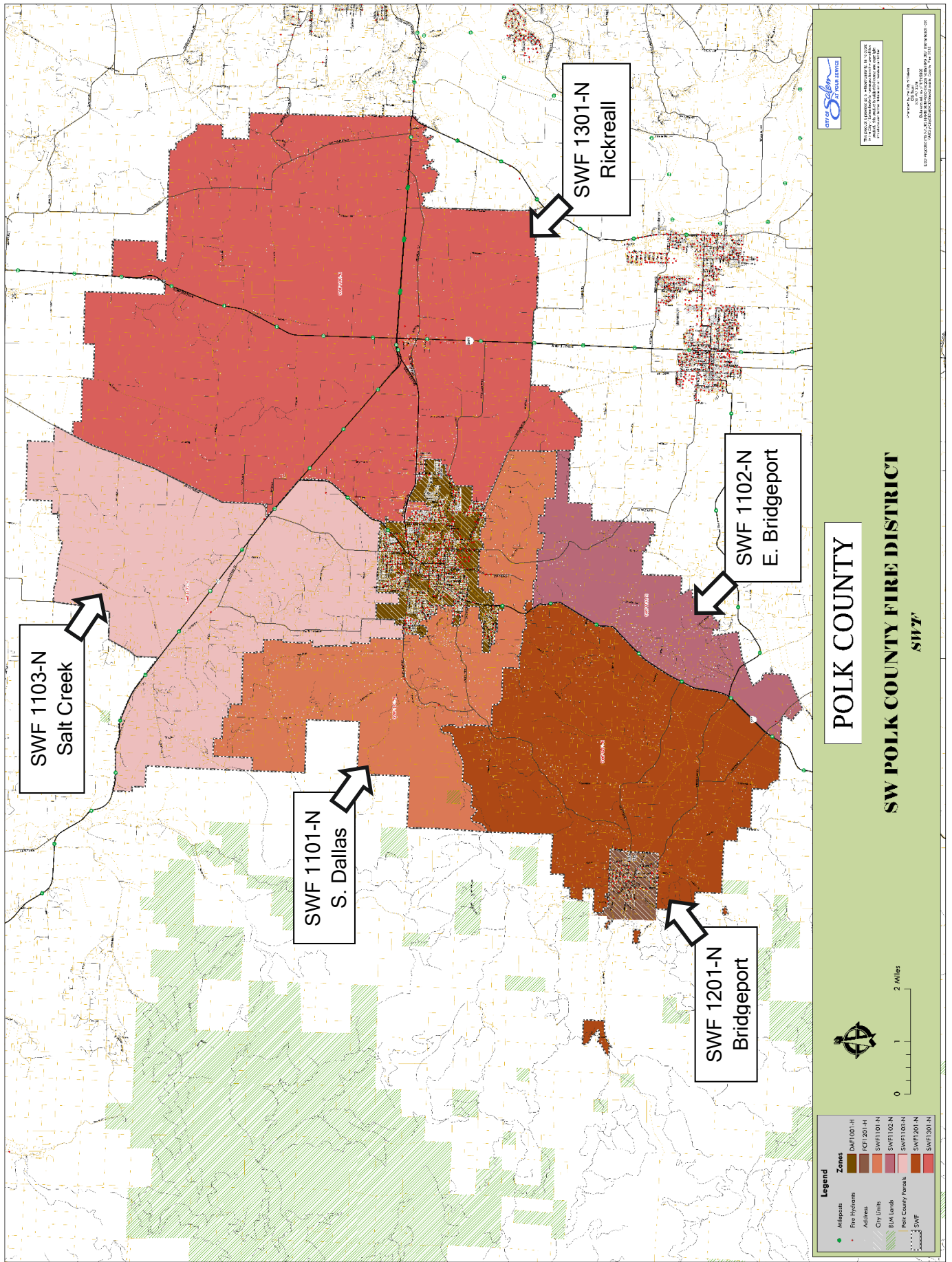
The district was on a consolidation path with Sheridan Fire District under a new name, “District 22”. This would allow the districts to pool resources and cut administrative costs. However, in May of 2021, the Sheridan City Council took no action on sending the consolidation effort to the voters for consideration. This lack of action effectively stopped any progression of the consolidation efforts. SW Polk and Sheridan continued to work cooperatively under an Intergovernmental Agreement (IGA) along with West Valley Fire District, sharing administrative staff and other resources.



On July 1, 2021, the administrative staff and four career staff were transitioned to SW Polk Fire District, as it became the new hosting agency for the three-district IGA. Sheridan Fire District elected to opt out of the IGA effective September 30, 2021. SW Polk continued to manage a dual IGA with West Valley Fire District until December 31, 2021. Between July and December 2021, there were times that SW Polk staff members were sent to cover West Valley’s fire station, as they were losing employees, leaving Rickreall station un-staffed by paid employees on occasion. This decision was made because West Valley Fire District had an Ambulance Service Area (ASA) to maintain, as well as a limited number of volunteers.

As the IGA’s dissolved, SW Polk developed a singular vision for the future of the district, including finishing the three new fire stations, initiating transport ambulance services, and moving toward a combination response model. Toward this end, SW Polk became a licensed EMS provider on November 21, 2021, and shifted from 12 to 24-hour staffing on December 25, 2021. As a newly licensed EMS provider, the district works with the current Ambulance Service Area (ASA) providers to provide service under a quick response model. Additionally, the SW Polk ambulance is used as a transport unit on occasion. With the 2017 bond funding, SW Polk operations evolved from a single station in Rickreall to three new stations throughout the district. These new stations are located in the communities of Bridgeport, Rickreall, and Salt Creek. With three new stations, the district revisited and renumbered apparatus to align with the new model, as well as revisited response recommendations through dispatch.

SW Polk Fire District has experienced many transitions in a short period of time, and these transitions are reflected in the incident data for 2021. As SW Polk continues its current operational trajectory, the district expects to see enhancements to incident data moving forward.



SW Fire District
 1103-N Salt Creek
 1101-N S. Dallas
 1201-N Bridgeport
 1102-N E. Bridgeport
 1301-N Rickreall

Polk County, Oregon
 SW Fire District
 1103-N Salt Creek
 1101-N S. Dallas
 1201-N Bridgeport
 1102-N E. Bridgeport
 1301-N Rickreall

POLK COUNTY

SW POLK COUNTY FIRE DISTRICT
 SWF



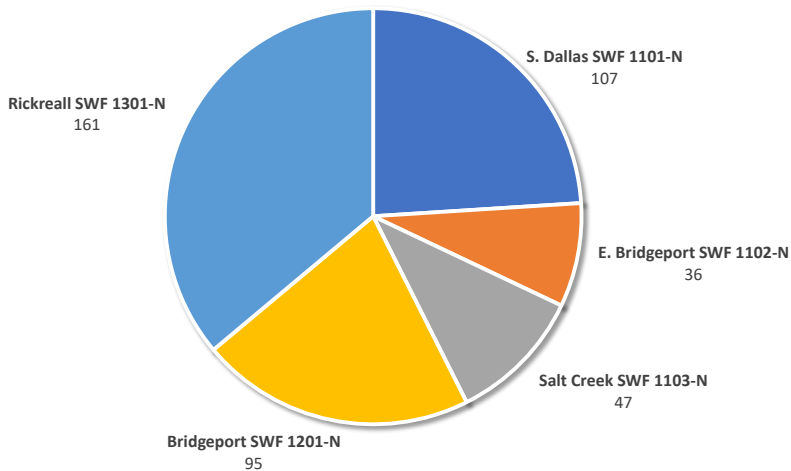
0 1 2 Miles

Legend	
•	Water
•	Fire Hydrants
•	Address
—	City Limits
—	BLM Lands
—	Polk County Parks
—	SWF
—	SWF 1001-N
—	SWF 1001-H
—	SWF 1101-N
—	SWF 1101-H
—	SWF 1102-N
—	SWF 1102-H
—	SWF 1201-N
—	SWF 1201-H
—	SWF 1301-N
—	SWF 1301-H

Incident Summary

The following incident data was provided by the Willamette Valley Communications Center (WVCC). The data was broken down by response zone and then by incident type. The Rickreall zone received the most incidents at a total of 161, followed by the South Dallas zone at 107 incidents, the Bridgeport zone at 95 incidents, the Salt Creek zone at 47 incidents, and the East Bridgeport zone at 36 incidents. Below you can see how the calls breakdown into Fire calls and Emergency Medical Incident (EMS).

EMS Incidents



446

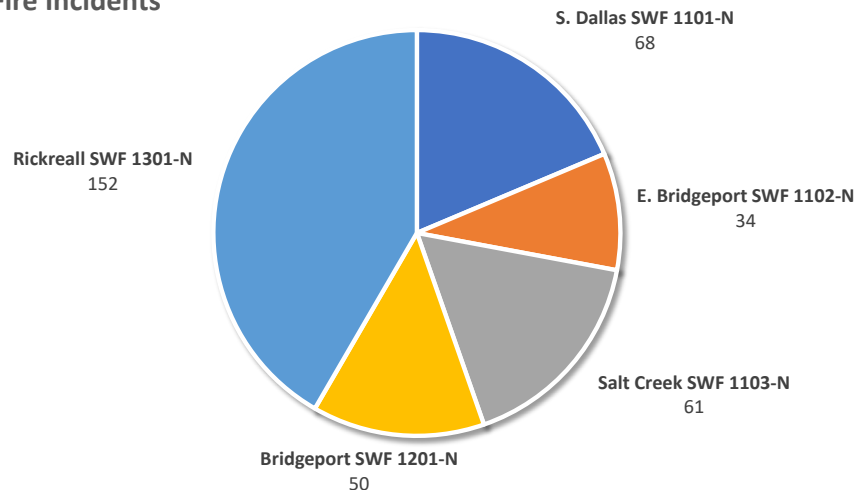
EMS INCIDENTS

Ambulance transport services for the SW Polk Fire District area are provided by Dallas Fire and EMS. This data indicates that there were 446 requests for EMS services for the year of 2021, a 6% increase from 2020. EMS incidents accounted for 55% of the total fire and EMS service requests within the SW Polk Fire District boundary.

Fire Incidents

365

FIRE INCIDENTS

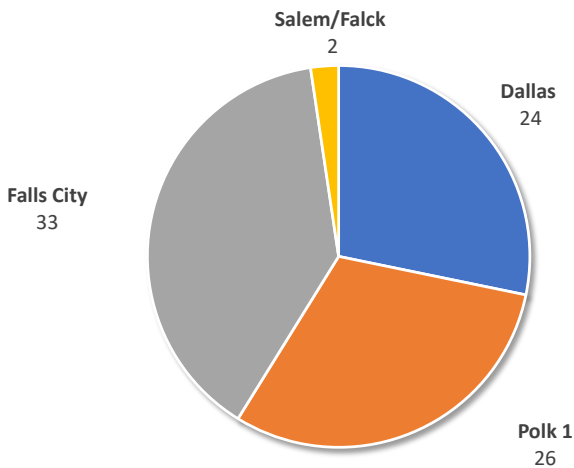


This data indicates that there were 365 requests for fire protection services for the year of 2021, a 34% increase from 2020. These incidents include structure fires, wildland fires, motor vehicle crashes, and other miscellaneous incidents.

Mutual Aid Data

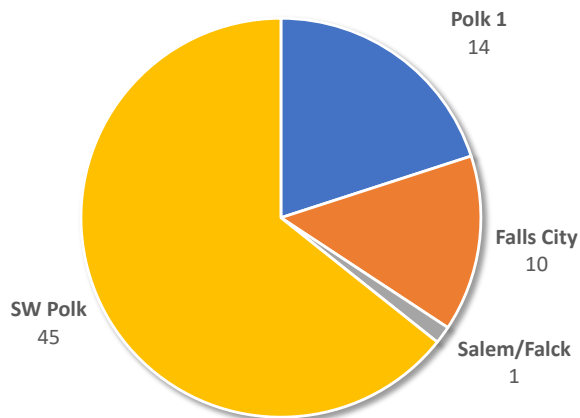
SW Polk receives and provides mutual aid with all surrounding Fire and EMS Districts, including providing Emergency Mobilization Response to large scale incidents across the state. The data demonstrated that SW Polk provided 65 responses to other surrounding Fire and EMS agencies. Bringing our total incident response number to 876, an increase by 19% from 2020. Dallas Fire and EMS maintains the responsibility for the Ambulance Service Area (ASA) for the entire SW Polk Fire District. The WVCC incident data was used to determine the number of times other agencies have assisted SW Polk on fire incidents. Furthermore, the data demonstrates the number of times mutual aid was provided to Dallas Fire and EMS on emergency medical incidents.

Mutual Aid to SWP Fire Incidents



Along with SW Polk and Dallas' collaborative mutual aid, the following districts also provide mutual aid: Polk County Fire District No. 1 (Polk 1), Salem Fire Department/Falck Northwest, and Falls City Fire Department. The data indicated that SWP provided mutual aid to Dallas EMS incidents within SW Polk on 1 incident. Falls City and Polk 1 provided EMS mutual aid for 7 and 8 incidents respectively. Falck Northwest (contracted with Salem) provided mutual aid once. Dallas Fire provided mutual aid to their own incidents one time.

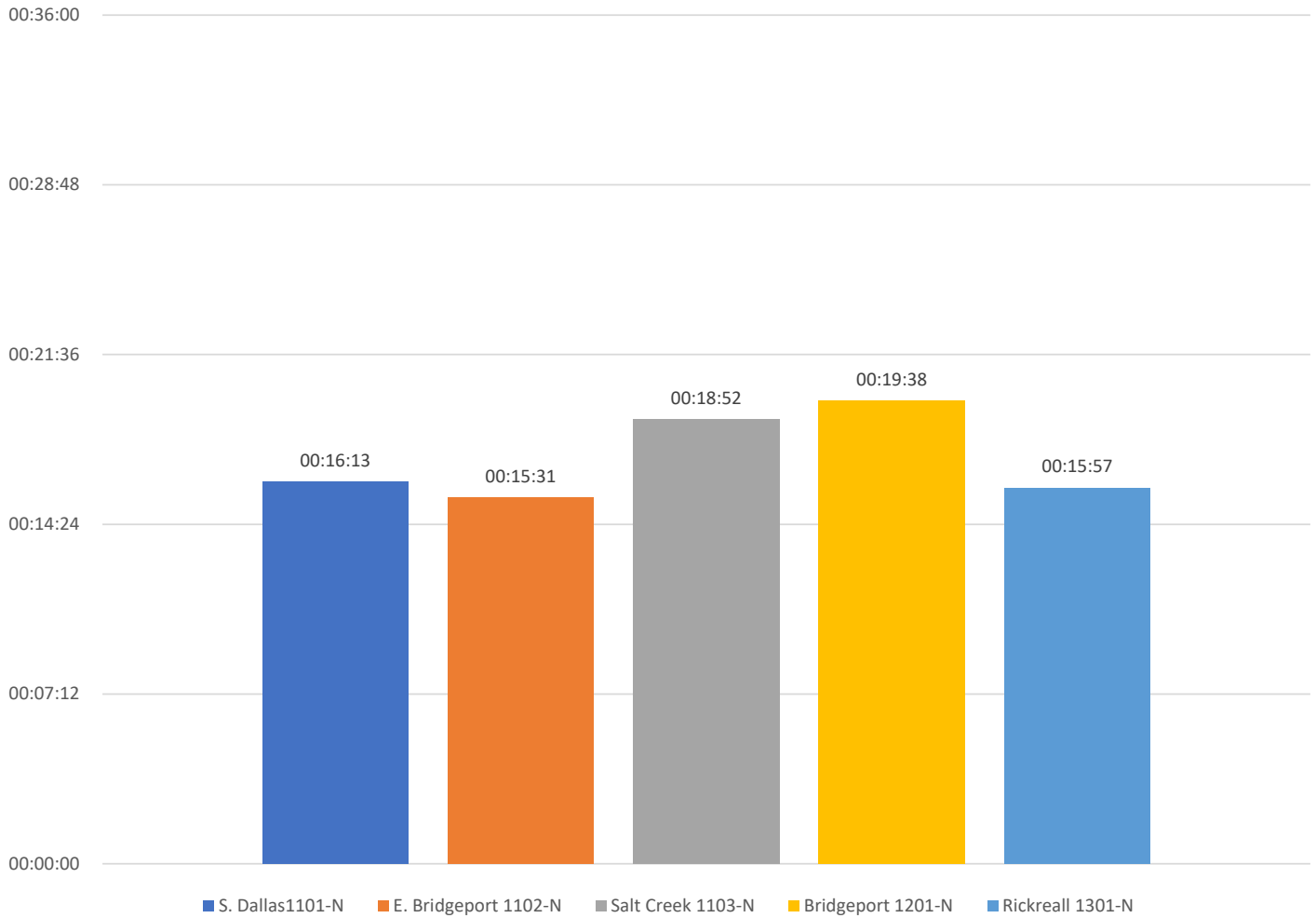
Mutual Aid to Dallas EMS Incidents within SW Polk



Mutual aid to SW Polk Fire incidents was provided by Falls City Fire Department at 26 incidents, Dallas at 16 incidents, Polk 1 at 12 incidents and Salem at 2 incidents.

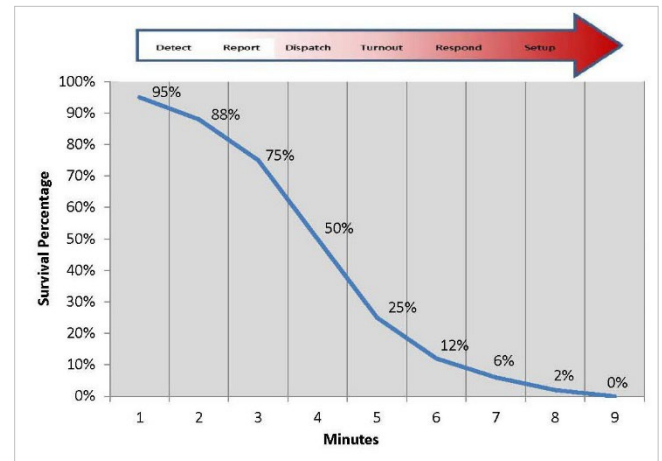
EMS Response Times

EMS Response 90% of the Time

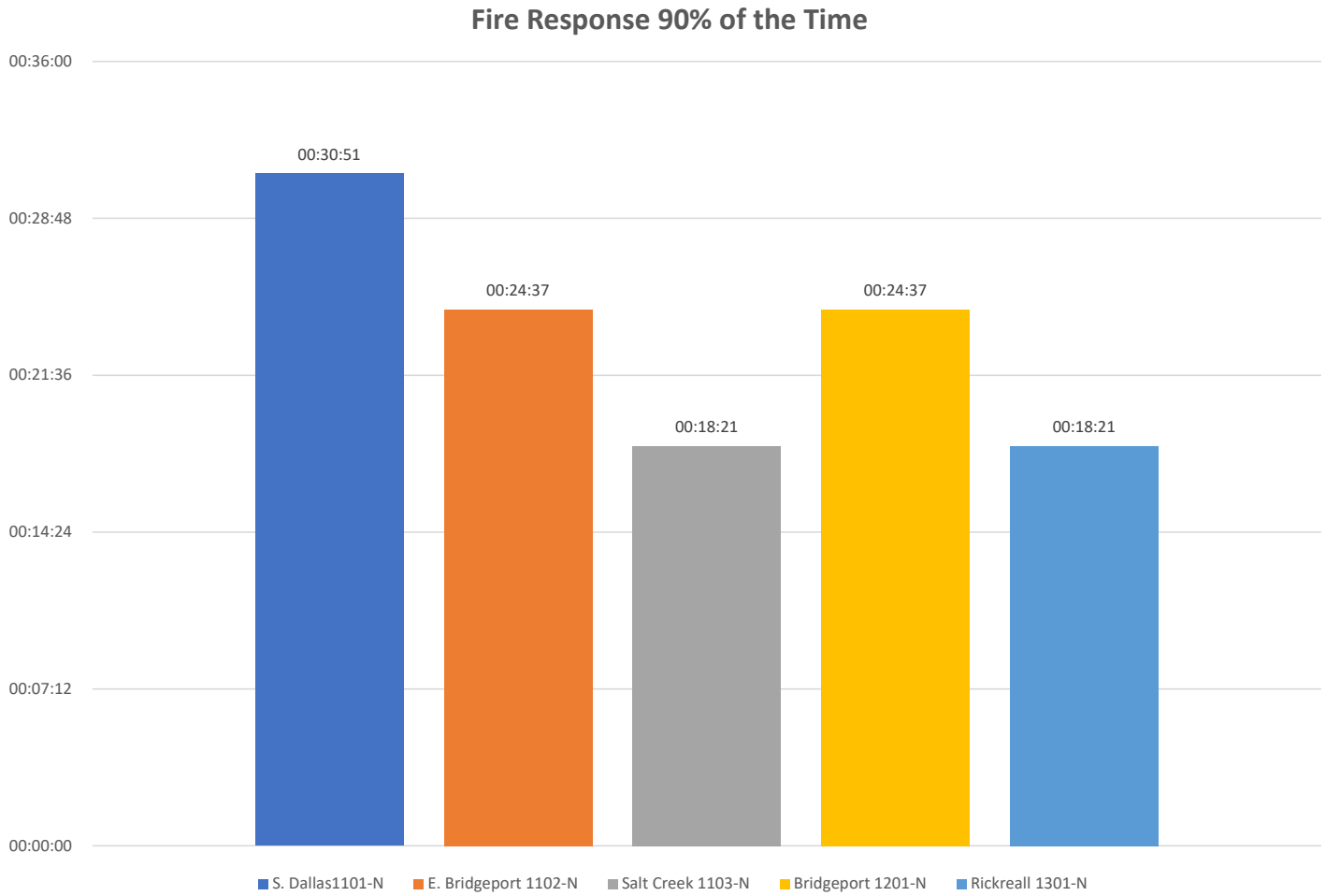


All response times elements are reported at the 90th percentile. Percentile reporting is a methodology by which response times are sorted from least to greatest, and a “line” is drawn at a certain percentage of the calls to determine the percentile. The above graph demonstrates the response time 90% of the time per each of the five response zones within the SW Polk Fire District for EMS incidents. This data includes both emergency and non-emergency incidents. See map of the fire response zones is located on [page 8](#).

The response time was determined by taking each incident and calculating the time it took from being dispatched for crews to arrive at the incident scene. This data is important for determining where coverage can be improved. As the chart on the right indicates, the chances of survival for cardiac arrest victims drops dramatically after four minutes.

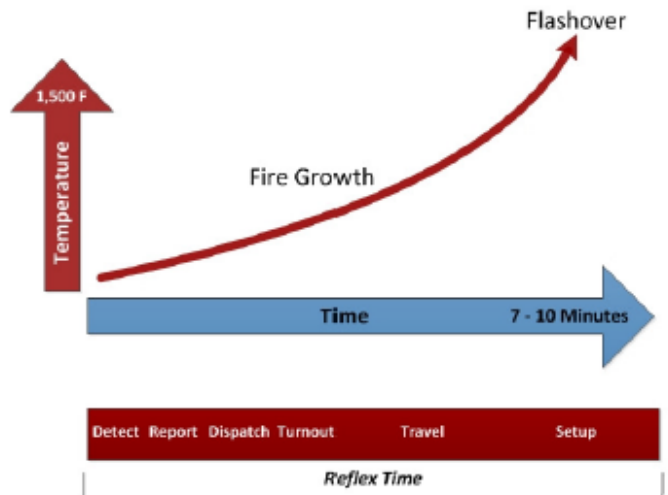


Fire Incident Response Times



The above graph demonstrates the response time 90% of the time per each of the five zones within the SW Polk Fire District for fire incidents. This data includes both emergency and non-emergency incidents.

The response time was determined by taking each incident and calculating the time it took from being dispatched for crews to arrive at the incident scene. This data is important for determining where coverage can be improved. As the chart on the right indicates, the chance of a flashover increases dramatically after 10 minutes. A flashover occurs with much greater frequency when airborne gases trapped in a burning building become so hot that they ignite, simultaneously triggering surrounding materials to burst into flame. In the 2016 Master Plan, response time for SW Polk incidents during the study period for fire and special operations was 24 minutes 14 seconds, 90 percent of the time. This data shows a slight improvement over the Master Plan data at 23 minutes and 22 seconds overall.



Facilities

In 2017, the citizens of SW Polk approved a bond measure for the construction of new fire stations. The Board of Directors developed and implemented a plan to construct the stations listed below. One on Rickreall Road, one on Salt Creek Road, and one on South Kings Valley Hwy. In the Fall of 2021, the three stations became operational. Career staff were placed in the Salt Creek Community Fire Station to provide 24/7 coverage in December of 2021. Volunteers continue to respond when available. With the additions of the stations and career staff, we anticipate next year's response data to improve, reflecting the new distribution of district resources.

Bridgeport Community Fire Station



6040 S Kings Valley Hwy

Rickreall Community Fire Station



9105 Rickreall Road

Salt Creek Community Fire Station



15455 Salt Creek Road

Apparatus

The 2017 bond purchased three new 2021 Pumper/Tender Engines, which are now operational and placed at each of the newly constructed fire stations. In December of 2021, SW Polk Fire District also began an ambulance service for the first time in its history.



FLEET

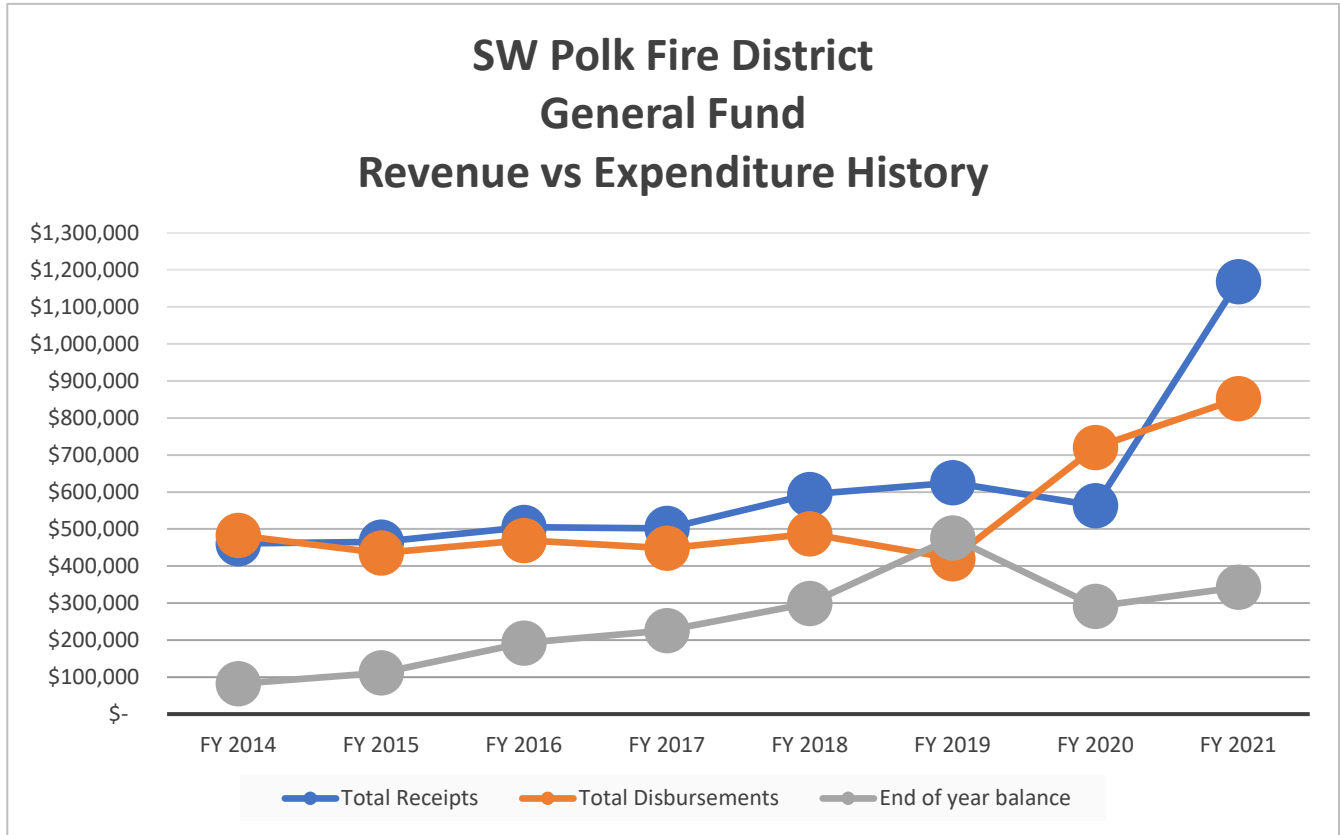
SW Polk Fire District has a variety of apparatus, including Engines, Ambulances, Wildland Engines, and Staff Vehicles. These vehicles are classified by size, capacity, and function in the table below.

Some of our apparatus are utilized in emergency mobilizations through the Polk County taskforce. During the 2021 wildfire season, our resources were deployed to six different conflagration incidents throughout Oregon.

In 2022 SW Polk anticipates expanding our fleet to include more ambulances, staff vehicles, and potentially replacing apparatus.

Make	Model	Type	Unit
International	Pumper	Engine III	HB 153
International	Pumper	Engine III	HB 143
Ford	Pumper	Engine VI	B 133
Freightliner	Pumper/Tender	Engine I	E 131
Freightliner	Pumper/Tender	Engine I	E 151
Freightliner	Pumper/Tender	Engine I	E 141
International	Tender	Tender I	T 142
International	Tender	Tender I	T 132
Ford	Ambulance	Medic I	M 144
Chevrolet	Pickup	Command III	D 130
Ford	Pickup	Command III	C 140

Financial Summary



SW Polk began in a new direction in 2014. The first year saw an increase to the end of year balance. In the following several years, there was a steady increase due to shared resources, grants, and other careful financial decisions. From FY 2014 to 2019, we sought ways to increase revenue and kept expenditures level. The above noted end of year balance decrease, for FY 2020, was a result of changes made that included contracting four new career response staff and administrative services through Sheridan Fire District. FY 2020 was the first full year under the three district Intergovernmental Agreement with Sheridan and West Valley Fire Districts, attempting a full consolidation pathway. At the end of FY 2021, the three-district consolidation pathway fractured, beginning the transition process back to a singular SW Polk vision. The SW Polk Board of Directors continue to provide direction in practicing sound financial decision making, with a mission of improving service to our citizens.